

COMPOST TURNER

LIGHT
AND
COMPACT.

2 METER TUNNEL WIDTH.
LOW MAINTENANCE COSTS.

TURNING CAPACITY:
UP TO 300 m³/h

TG 201

**MECHANICAL
FOR COMPACT LOADERS FROM 30 HP**



With composting devices from Gujer Innotec,
you can produce high-quality, aerobic soil
nutrition in the shortest possible time.



“Living and working with nature.”

In 1995, at Gujer Landmaschinen AG, which so far was only focused on repairs and trade, we built our first compost turner in Mesikon ZH, because in the market there was no model that met our needs. With Gujer Innotec we are always guided by technological progress, we attach great importance to quality, ecology and sustainability, in order to provide optimal concepts and customized machines.

Renato Gujer

Short Description TG 201



The TG 201 is an easy to use, mechanically operated, stable and maneuverable compost turner. Ideal for agriculture, gardening, ecological companies and small communities with a composting plan up to 500 tons per year.

Use with compact loader

The Compost



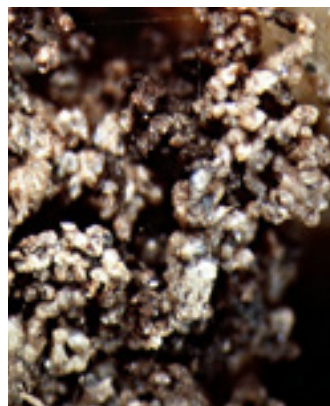
*Healthy humus –
Healthy plants*

To obtain a high quality soil, some experience and intuition is needed. With the right technique and the adequate machinery, soon an aerobic nutritious humus can be produced and thus a healthy soil, which automatically results in healthy plants, healthy animals and healthy people.

Moreover, a soil rich in humus stores CO₂ naturally, protecting our climate.

Therefore, with composting a nurturing of the soil is achieved rather than of the plants.

Within five to eight years you can increase the humus content in the soil from one to up to five percent.

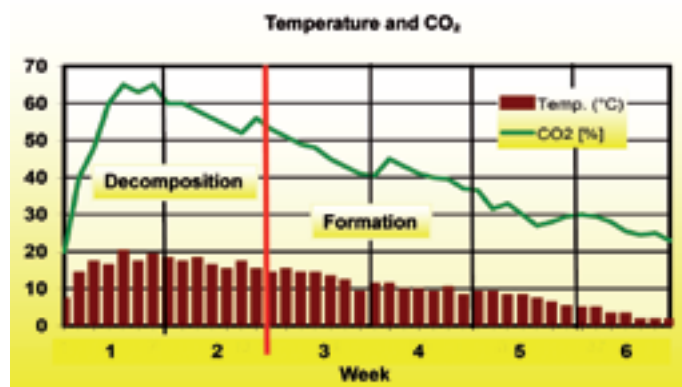


Perfect crumb structure - microscopic view

The Turning

A controlled aerobic composting is recommended. The oxygen content of compost windrow must be observed on a daily basis. The Controlled Microbial Composting (CMC) method uses a substitution test via CO₂-monitoring. If CO₂ content of a windrow rises above 12%, the oxygen content drops under 5%, and will need to be turned.

The temperature must not rise above 65°C and humidity must be between 50 and 60%. Additional information is available from the composting courses of Urs Hildebrandt: www.landmanagement.net.



Temperature and CO₂ in the compost.

TG 201 – Its Advantages at a Glance

Capacity up to 300 m³/h.

Maneuverable machine; TG 201 has a length (transport position) of only 2.7 meters.

Low maintenance costs, easy maintenance

Easy to maneuver, simple to use

The massive construction of the tunnel-shaped dome and 5 mm steel achieves great stability and omits any weak points in the structure. In addition the powder coating protects against corrosion.

All the wear plates are made of chromed steel

Robust axel with balanced turning, which properly turns the compost material (from the inside to the outside)

Fast aerobic composting; within 8 - 12 weeks, depending on the material



With the TG 201 a successful composting is achieved easily and quickly. This is due largely to the turning axis that works perfectly and that moves the material from the inside to the outside, so that the microorganisms can be replicated everywhere optimally.



The solid arch construction made of 5 mm steel ensures a very high stability.



All wear plates are made of chromed steel.



Horse manure after 5 weeks.



Maximum dimensions of the battery: 2.0 x 1.0 m



12 mm shaft width with 3 fixed screws. The balanced axle ensures long life.



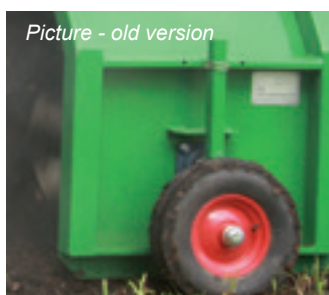
Easy operation with the standard hitch system.



Feeding plate for clean pile edges



It is possible to drive on grass with a compact loader.



Picture - old version

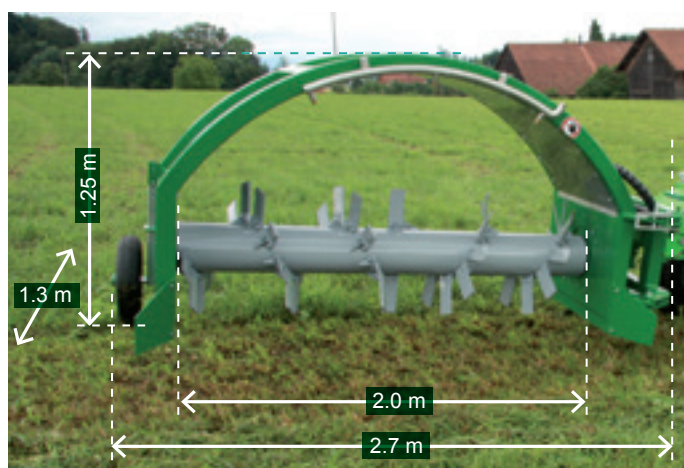
Simple altitude setting for the roller to work close to the ground yet cannot form any layer of putrefaction



The fabric cover is joined to a smaller width to allow gases to escape. The hard manual work involving the wet fabric is avoided.

Technical Facts TG 201

Capacity from	300 m ³ /h
Tunnel width	2.0 m
Total width in transport position	1.3 m
Working Width	up to 2.2 m
Total height, transport position	2.7 m
Internal tunnel height	1.15 m
Ideal working speed	max. 300 m/h
Weight	ca. 600 kg
Windrow Width x Height	2.0 x 1.0 m



TG 201 Basic equipment, mechanical design

Tunnel with chrome steel plates
Large support wheel outside the tunnel (swivel)
Mechanical feeding plates
With standard hitch system for compact loaders
Fleece guides front and rear

Options for TG 201

Hydraulic quick coupling for compact loaders	OPTIONS
Water sprayer with nozzles	

Requirements for the Compact Loader

For compact loaders with total width	up to 1.7 m
For compact loaders from Ideal	30 hp 35 hp
The working pressure of the hydraulic system must reach at least with at least	200 bar 40 l of oil per min.



Transport position



Operating position

Options for TG 201



Hydraulic quick coupling for compact loaders



Water sprayer with nozzles. To achieve an optimal microorganism climate within the mound, the addition of water is essential.

Your contact person

Consulting and sales

Renato Gujer
Tel. 052 346 21 94
rene.gujer@gujerland.ch

Daniel Büchi
Tel. 052 346 21 94
Werkstattchef@gujerland.ch

Reserve the right to make technical changes.
The images do not always correspond to the basic equipment.
The purchaser is responsible for the country-specific operating permit.

Gujer Innotec AG
Horbenerstrasse 7
CH-8308 Mesikon

Tel.: +41 (0) 52 346 21 94
Fax: +41 (0) 52 346 21 93

rene.gujer@gujerland.ch
www.gujerinnotec.ch